

# NEW!



## OmniSol A

The modular on-roof collector by Winkler Solar

The new modular on-roof collector **Winkler OmniSol A** sets standards in modern product design, innovative materials und professional craftsmanship.

The new full plate absorber, made by laser welding provides highest efficiency and perfect optics in one. Even the header tubes are welded to the absorber sheet.

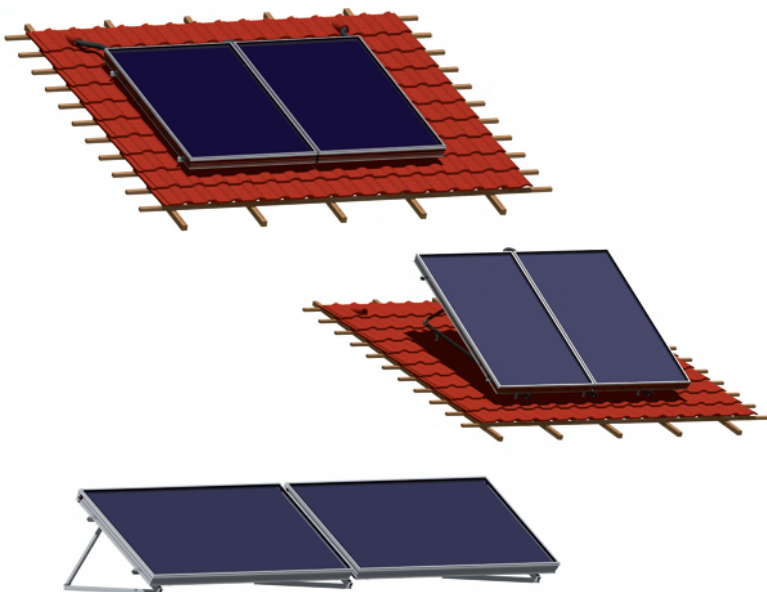
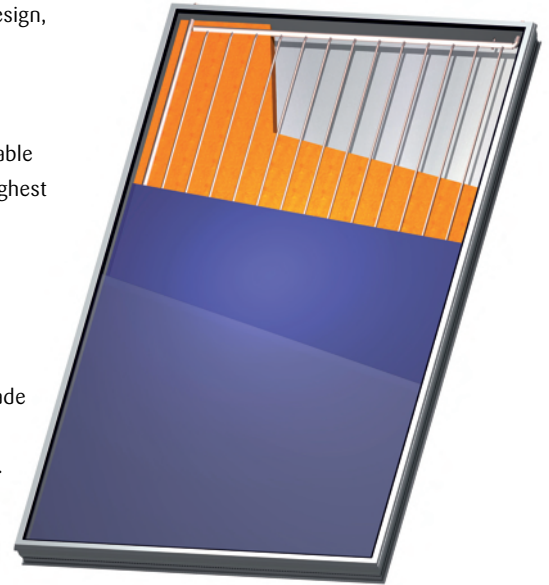
A double wall anodized frame profile with additional lateral insulation makes the collector stable and minimizes heat losses. The back panel has a 60 mm thick insulation which guarantees highest performance even in cold environments.

The front cover is made from a highly transparent solar glass with an additional anti-reflective coating on it (OmniSol A-antireflex). The sealing is designed from a surrounding, weather proof EPDM profile that has vulcanized corners. The back panel is made from a seawater resistant aluminum alloy.

Mounting of the collector is easy and quick, because we provide a prefabricated system made from aluminum profiles and stainless steel connections.

Even hydraulic connection is simple and safe by just two tube connections on each collector.

The collector is available in a vertical and a horizontal model type.



**Winkler OmniSol A** collector will exceed your expectations. Efficiency up to 84% \*) mean highest levels of performance. **Winkler OmniSol A** quality can convince by test reports of the SPF Rapperswil and solar keymark \*).

\*) performance and quality tests still in progress

For the **Winkler OmniSol A** we can supply any kind of mounting materials for on-roof mounting, flat roof mounting and facade applications. Choose from an easy system.

The data at a glance:

Size:	2,75 m <sup>2</sup> (overall), aperture area 2,52 m <sup>2</sup>
Dimensions:	2200 x 1250 x 110 mm
Weight:	approx. 52 kg
Frame:	Alu hollow profile, anodized with additional lateral insulation back panel from aluminum stucco sheet, seawater resistant
Front cover:	Solar glass 4 mm, fully tempered, structured, anti-reflex coated (OmniSol A-antireflex)
Absorber:	Full plate absorber, laser welded mit welded header tubes
Insulation:	Mineral wool, 60 mm
Tube connections:	Copper, ø18 mm
Working pressure:	approx. 3,5 bar (recommended)
Performance:	Performance tests according to EN 12975 and solar-keymark certification are still in progress

### OmniSol A made for:

- on-roof
- free fields
- balcony mounting
- facade mounting